

# Facial Reconstruction

Artistry and Precision with Dr. Carlos Mendez



**MEXICO TRANSGENDER CENTER**

---

# Facial Rejuvenation

Advanced Techniques in Restoration

# SMAS vs. Deep Plane Lifting

## 2-Layer SMAS Lift

This method focuses on the Superficial Musculoaponeurotic System. By lifting and tightening this layer separately from the skin, Dr. Mendez achieves a more reliable and longer-lasting result than traditional methods.

Ideal for correcting sagging skin and facial creases with predictable, elegant outcomes.

## Deep Plane Facelift

The premier standard for facial surgery. It involves releasing facial ligaments and lifting the skin and muscle as a single composite unit. This produces a profoundly natural, tension-free appearance.

Highly effective for mid-face elevation and creating a sharp, youthful jawline silhouette.

# Technique Comparative Analysis

FEATURE	SMAS FACELIFT	DEEP PLANE FACELIFT
<b>Dissection Plane</b>	Superficial (Above SMAS)	Sub-SMAS (Deeper Plane)
<b>Ligament Release</b>	Partial	Complete / Comprehensive
<b>Recovery Profile</b>	Moderate Downtime	Potentially faster swelling resolution
<b>Malar Elevation</b>	Moderate	Maximum Midface Lift
<b>Durability</b>	7 – 10 Years	10 – 15+ Years

# Precision Rhinoplasty

## Refined Aesthetic Profiles

MTC offers various nose surgeries tailored to the individual's feminine needs. Dr. Mendez focuses on achieving structural harmony without compromising function.

- **Closed Technique:** Internal incisions for zero external visibility.
- **Open Technique:** For cases requiring greater surgical access.
- **Tip Refinement:** Expert correction for bulbous or asymmetrical nose tips.



# Specialized Facial Refinement



## Otoplasty

Correction of protruding ears via cartilage reshaping. Incisions are discreetly placed and unnoticeable from the back.

## Lip Lift & Filler

Reducing the sub-nasal distance to raise the upper lip, creating a youthful, feminine smile and improved facial proportions.



## Trachea Shave

Chondrolaryngoplasty aims to reduce thyroid cartilage size, achieving a smooth and feminine neck area.

---

# Structural Contouring

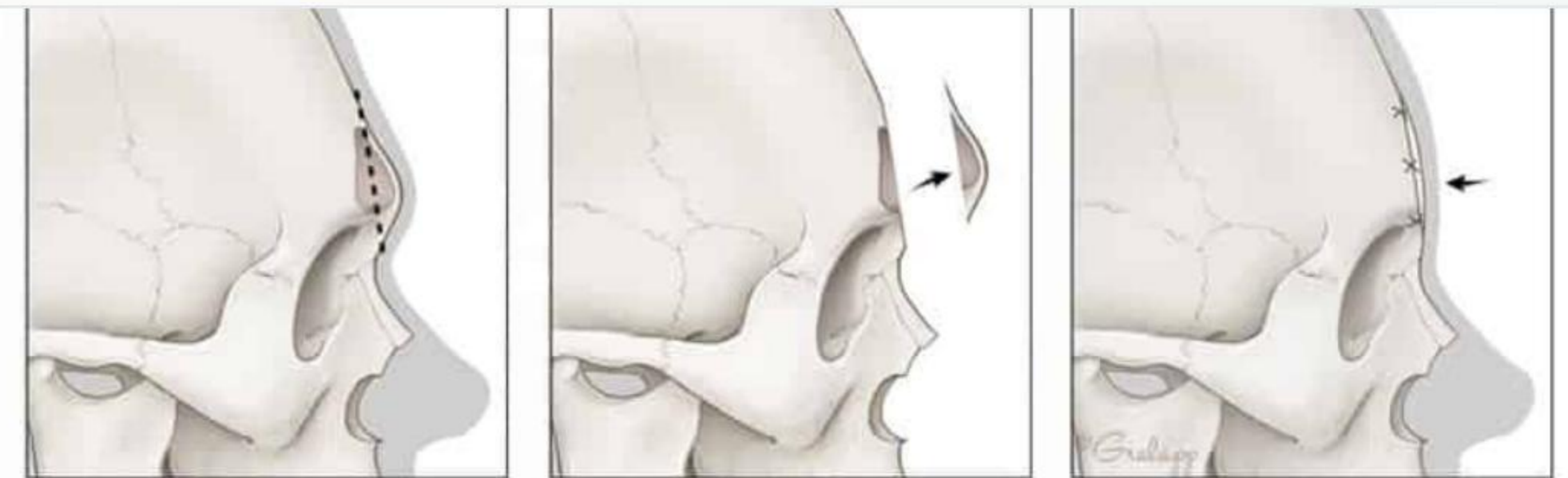
Sculpting the Skeletal Framework

# Forehead & Brow Contouring

## Supraorbital rim reduction

Using bone burring or remodeling, this procedure reduces the masculine prominence of the brow ridge. Dr. Mendez focuses on creating a softer orbital area.

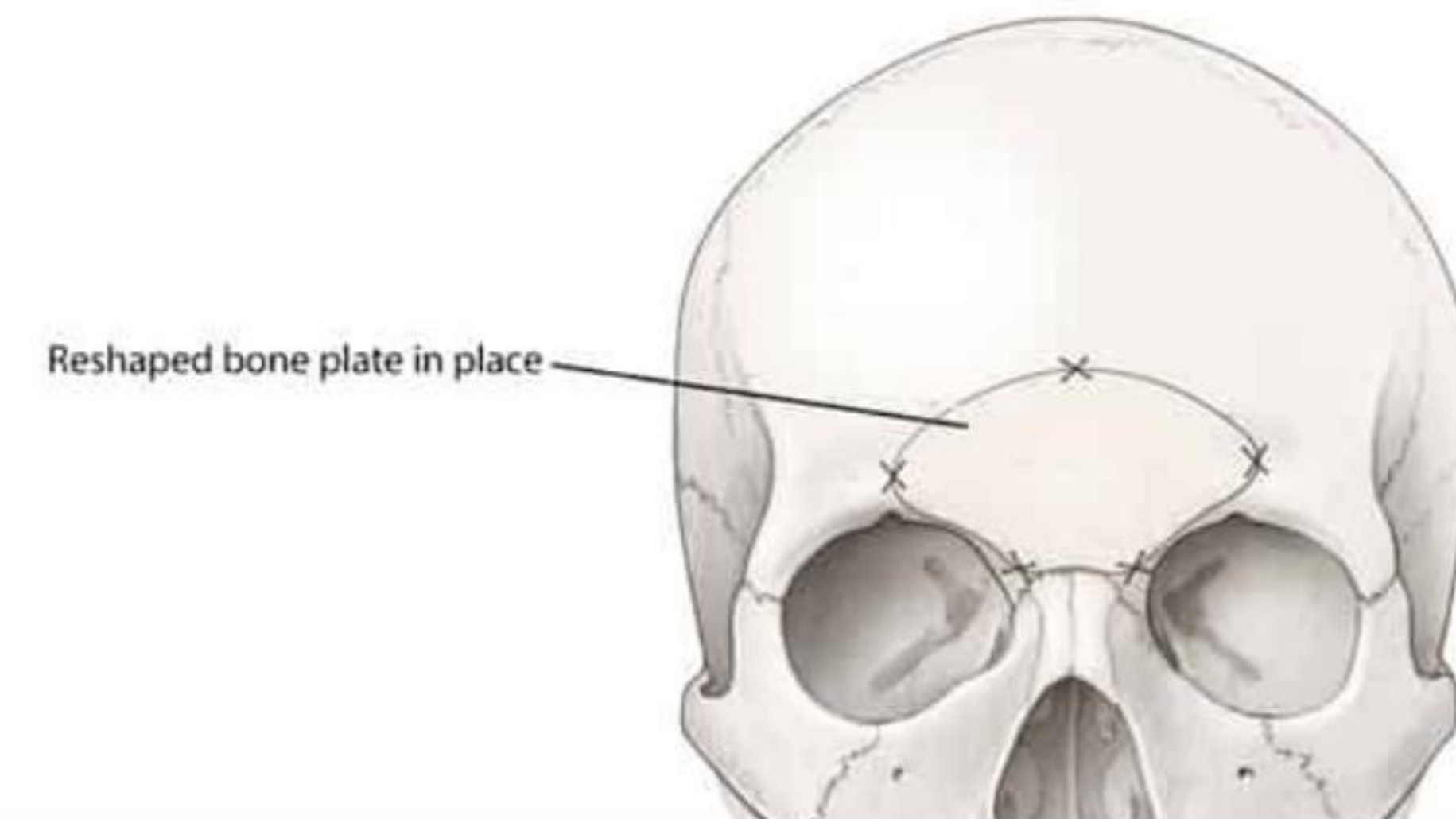
**Brow Lift:** Often combined to raise eyebrows to a feminine level, balancing the upper face and opening the gaze.



Type III--bone incision

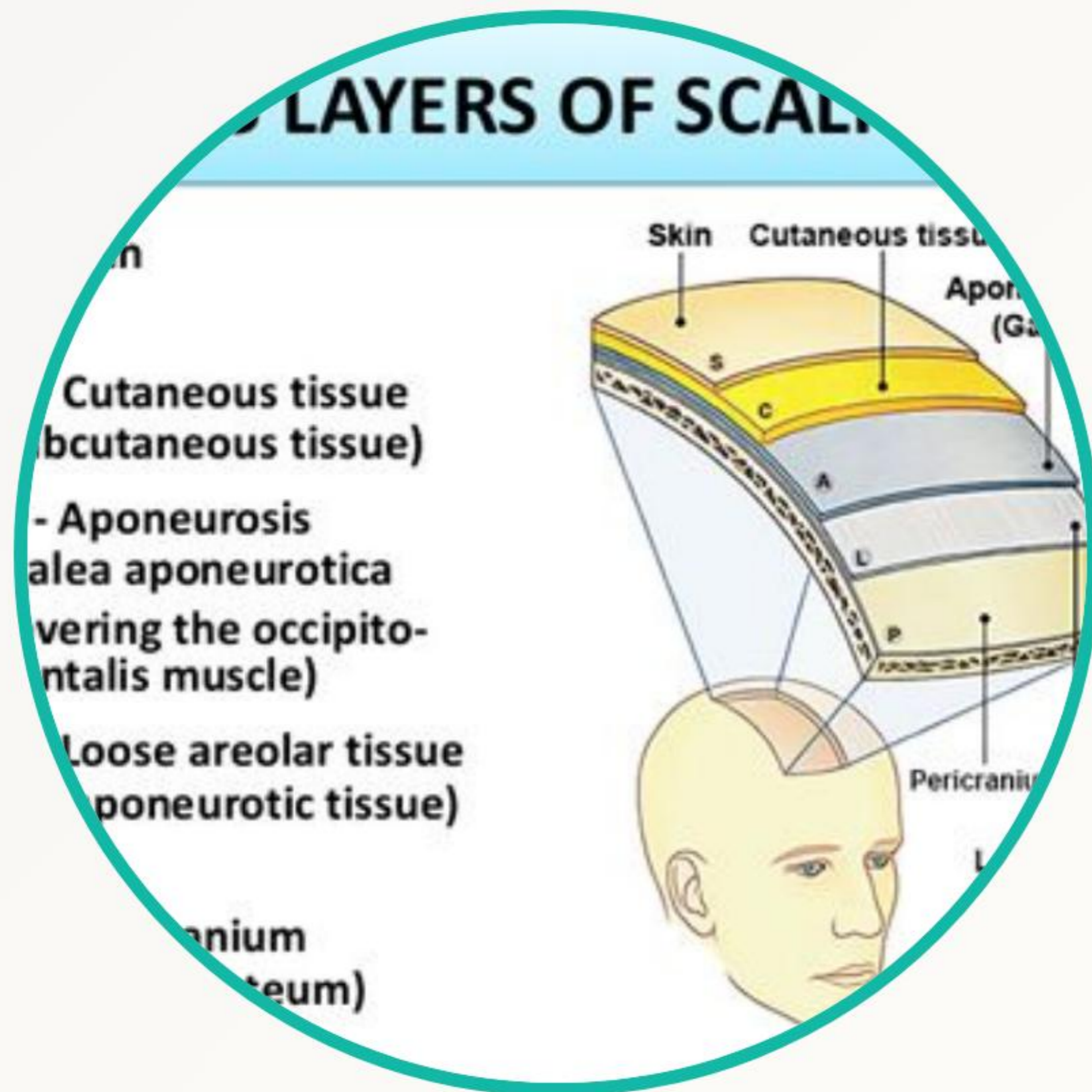
Type III--bone plate removed and reshaped

Type III--Reshaped bone plate replaced



Reshaped bone plate in place

# Hairline & Scalp Reconstruction



## Advancement & Restoration

**Hairline Advancement:** Surgical advancement towards the eyebrows to reduce forehead height. Incisions are concealed for optimal aesthetic results.

**FUE Transplant:** Follicular Unit Extraction is utilized for patients with significant male pattern baldness to round out the feminine hairline.

---

# **The Mid & Lower Face**

Defining the Feminine V-Line Profile

# Cheekbone Contouring

## Malar Volume & Repositioning

Reshaping the zygomatic bones to narrow the middle part of the face, achieving a soft and feminine profile proportional to other facial features.

For patients with flat cheekbones, **Cheek Implants** are recommended to provide more volume, projection, and mid-face elegance.

# Jaw & Chin Contouring (V-Shape)

## Narrow V-Line Aesthetics

This procedure is designed for patients wishing to achieve a narrower, feminine "V" shape face. Dr. Mendez utilizes a precise one-line reduction technique.

**Intra-oral Approach:** All reduction is carried out through the mouth, ensuring **no visible scars or incisions** on the face.

**Chin Implant:** Often combined to enhance projection and attain a proportionate lower facial structure.



# Surgical Outcome Summary

FACIAL REGION	RECOMMENDED PROCEDURES	DESIRED RESULT
Upper Face	Brow Bone Reduction / Hairline Advancement	Softened brow, lower hairline
Mid-Face	Rhinoplasty / Cheekbone Contouring	Refined profile, elegant malar volume
Lower Face	V-Line Jaw Reduction / Chin Implant	Tapered V-shape, balanced projection
Neck	Trachea Shave / Deep Plane Neck Lift	Smooth contour, defined jawline

# Questions & Consultation

Excellence in Gender-Affirming Surgery

**MEXICO TRANSGENDER CENTER**  
**Dr. Carlos Mendez**

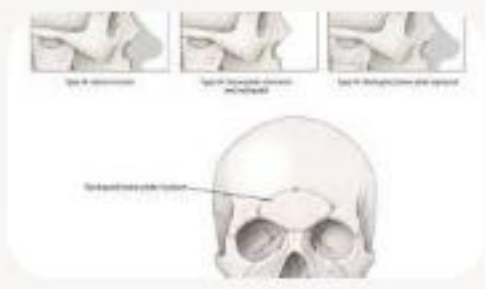
# Image Sources



<https://www.seckinulusoy.com/wp-content/uploads/2026/03/Before-and-after-side-profile-comparison-of-a-woman-showing-rhinoplasty-results-with-improved-nose-shape-smoother-nasal-bridge-and-enhanced-facial-harmony-on-the-right-side.jpg>

Source: [www.seckinulusoy.com](http://www.seckinulusoy.com)

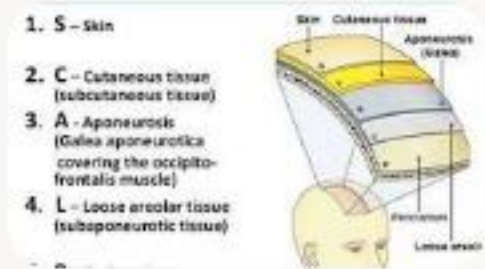
---



[https://deschamps-braly.com/wp-content/uploads/2025/10/Type-III-set-labels\\_preview.jpg](https://deschamps-braly.com/wp-content/uploads/2025/10/Type-III-set-labels_preview.jpg)

Source: [deschamps-braly.com](http://deschamps-braly.com)

---



<https://cityfacialplastics.com/wp-content/uploads/2020/04/hairline-lowering-nyc.jpg>

Source: [cityfacialplastics.com](http://cityfacialplastics.com)

---



<https://exploreplasticsurgery.com/wp-content/uploads/2026/01/zygomatic-arch-implant-con-concept-Dr-Barry-Eppley.png>

Source: [exploreplasticsurgery.com](http://exploreplasticsurgery.com)

---



<https://titemedicalaesthetics.com/wp-content/uploads/2025/02/is-jawline-attractive-for-female.jpg>

Source: [titemedicalaesthetics.com](http://titemedicalaesthetics.com)